

# NS1 Workers Protection Module

## Workers exposure to noise and vibration



Member of GHM GROUP

In compliance with Dir. 2003/10/CE, Dir. 2002/44/CE, UNI 9432/11, EN ISO 9612/11, EN 458

Integrated noise and vibration data and measurements management

Managing global data and time history (Profile)

Masking functions for removal of abnormal events

Management "task based" and "Job based" according to ISO 9612/11

Management of homogeneous groups of workers

Management of the sources *constant, cyclical, fluctuating and impulsive* with automatic recognition of the type of noise and automatic verification of the conformity to UNI9432/11

Customizable PPE database

Companies and workers database

Machine database - database link with Ispesl

Import external database into excel or txt

SNR, HML, OBM methods of calculation, PPE-u protection factor

Double PPE Management - Direct verification of the adequacy of the PPE

Coloured display of exceedances for an immediate evaluation. Summary table with immediate representation of workers most at risk

Both daily and weekly exposure

Management of the extended uncertainties

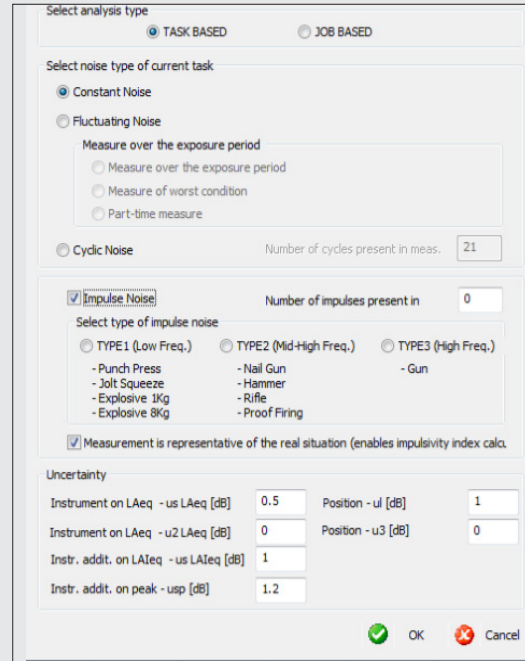
Automatic print of report and charts

SLM direct parameters setup

The **workers protection module of Noise Studio** is a powerful tool for noise and vibration risk assessment inside a company.

With the implementation of the latest international regulations, automated and guided procedures, to the great versatility of use, Noise Studio highly speeds up the work of the consultant and allows to get reliable results without wasting time in the processes sometime complex.

The processing functions of measures and profiles are intuitive and powerful allowing a full analysis of the sound phenomenon.



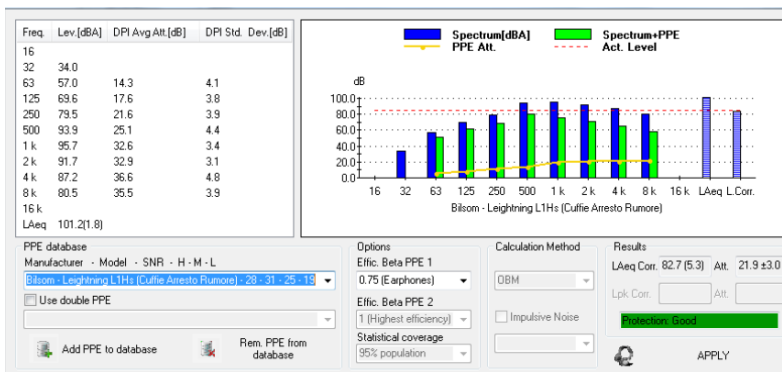
Type of analysis selection - Task based - Job based - Type of noise - Managing of the uncertainties

DATE	SITE	OPERATOR					
2011/07/22	Padova						
COMPANY	ADDRESS	PLANT					
Delta Ohm	via Marconi 5 Castello di Sotterazzo 35030	via Marconi 5 Castello di Sotterazzo 35030					
WORKER DATA	Matteo Di2	Nome: Giuseppe Cognome: Rampazzo Mansione: operaio Analysis: Task based					
DWY	EXPOS	LEX,IN LEVEL	LQA MAX	LEX,IN WITH PPE	LQA MAX	Effic PPE	Notes
Monday	08h:00m00s	91.8 dBA (1.8)	112.6 dBC (2.6)	87.8 dBA (1.8)	108.6 dBC (2.6)	Good	
Tuesday	07h:00m00s	91.5 dBA (1.8)	113.3 dBC (2.6)	87.8 dBA (1.8)	108.6 dBC (2.6)	Good	
Wednesday	07h:00m00s	91.5 dBA (1.8)	113.3 dBC (2.6)	87.8 dBA (1.8)	108.6 dBC (2.6)	Good	
Thursday	07h:00m00s	91.5 dBA (1.8)	113.3 dBC (2.6)	87.8 dBA (1.8)	108.6 dBC (2.6)	Good	
Friday	07h:00m00s	91.5 dBA (1.8)	113.3 dBC (2.6)	87.8 dBA (1.8)	108.6 dBC (2.6)	Good	
Saturday							
Sunday							
Week		91.8 dBA (1.8)	113.3 dBC (2.6)	87.9 dBA (1.8)	108.6 dBC (2.6)		

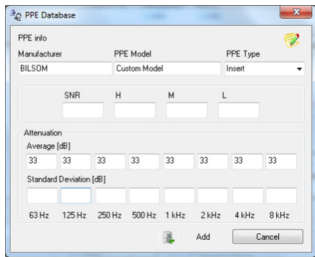
Mach. Model	Linea pick. a	Galleria di tiro	Motosega 2	Motosega 2	Misure prote.	Sorgente 7	S...
Lovara	Polgono Via...	Sandigarden	Malita	123456			
Machine an	123456	123456	123456	123456			
Mach. Descr.	100V						
L(Aeq)(dB)	82.1 (1.9)	101.2 (1.9)	116.5 (1.9)	97.3 (1.9)	105.8 (1.9)	98.8 (1.9)	91.9 (1.9)
L(C)(dB)							
L(L)max(dB)	98.1 (2.6)	123.0 (2.6)	142.3 (2.6)	118.3 (2.6)	128.3 (2.6)	120.8 (2.6)	112.6 (2.6)
Tm	19m:33s	37m:06s	00m:21s	23m:51s	04m:00m:00s	05m:00s	06m:00s
Spectrum	Si	Si	Si	Si	Si	No	No
PPE	None	Bilcon - Leig	Howard Let.	Bilcon - V&L	Bilcon - Clai	Bilcon - Thu	None
Atten (dB)	23.8 (+1.0)	21.9 (+1.4)	24.4 (+3.0)	34.1 (+2.7)	25.0 (+2.4)		
L(Aeq) conf(dB)	78.3 (1.1)	81.3 (1.1)	78.8 (1.1)	74.4 (1.1)	73.8 (1.1)		
L(L)max conf(dB)	115.7 (1.7)						
Noise Type	Constant	Cyclic	Fluctuating...	Fluctuating	Fluctuating	Fluctuating	Constant
Meas. n°	1	1	1	1	1	5	1
Meas. type	Total Exp.	Partial Exp.	Worst cond.	Worst cond.	Total Exp.	Partial Exp.	
Impulsive Index			18.3				
Ototoxic Substances							
Hand Arm Vibrations							
Whole Body Vibrat.							
Acoustic alarms							
Notes							
Conformity	Nessuna	Si	Si	Si	Si	Si	Si
Confidence Lev. 95%	80.8 (L(Aeq) 05dB)	105.8 (L(Aeq) 1)	105.8 (L(Aeq) 07dB)	105.8 (L(Aeq) 1)	105.8 (L(Aeq) 07dB)	105.8 (L(Aeq) 1)	105.8 (L(Aeq) 1)

List of the machines - Worker sheet - Weekly and daily exposure - Company summary sheet - Report printout

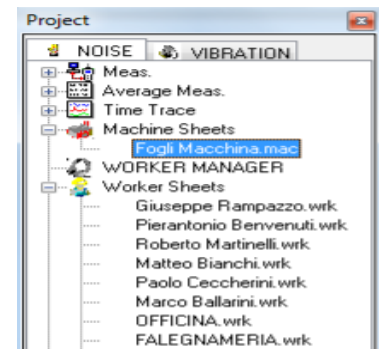


## PPE Management

- Real time attenuation display (PPE choice auxiliary)
- Customizable PPE
- PPE efficiency
- Double PPE management
- Wide database included
- Calculation methods SNR, OBM, HML (impulse)

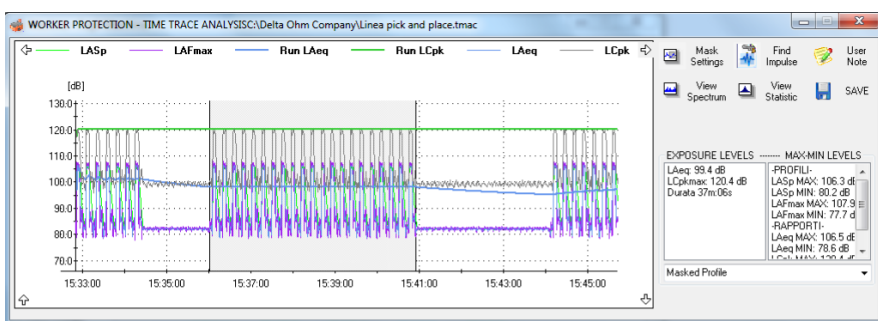
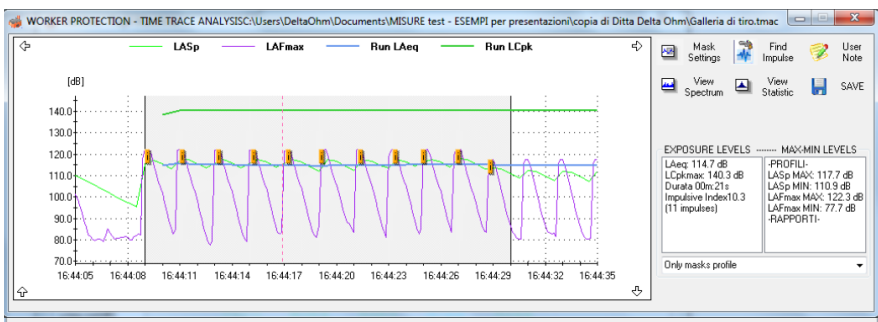


**MEASUREMENT UNCERTAINTY:** measurement data are displayed including extended uncertainty and customizable coverage factor. The extended uncertainty includes instrument, positioning and sampling uncertainties according to ISO9612/11 standard.



Project data organization with all-in-one tree structure. Direct access to significative data with a simple click. Possibility to include Word documents and pictures in the project for comprehensive data reporting.

Integrated Noise and Vibration data management.



## MEASURE MEANAGEMENT

Noise Studio integrates time profile data post-processing in the NS1 Workers protection module with multiple masking function on time profiles. This function allows to exclude from calculation unwanted noise events.

NS1 module allows also automatic identification of impulse noise and its characteristics (cyclic, stationary, fluctuating).

Available languages: English, italian - Software compatibility: Win98, 2000, Vista, XP, Win7 (32-64), Win8, Win10



In order to ensure the quality of our instruments, we are constantly re-evaluating our products. Improvements can imply changes in specification; we advise you to always check our website for the newest version of our documentation

We look forward to your enquiry  
 Phone +39 049 89 77 150  
 Email: sales@deltaohm.com

Delta OHM S.r.l.  
 Single Member Company subject to direction and coordination of  
 GHM MESSTECHNIK GmbH  
 Via Marconi 5 | 35030 Caselle di Selvazzano (PD) | ITALY