

WHY MIRA-MONITOR?

Logged Values

- Temperature: 32° to 1832°F
- Differential pressure: 0" to 20" WC

Logging Rate

- Log data every minute
- Average 1-minute data to a rolling 1-hour average
- Average 1-hour data to a rolling 4-hour average

Visualization

- LCD messages
 - Alarm for "high exhaust temperature"
 - Alarm for "high differential pressure"
- Door-mounted LED lights

Export Data Format Options

- CSV comma-separated variables
- TSV tab-separated variables
- TXT space-separated columns with a fixed minimum width per column
- XID raw data in a secure format

Data Analysis and Graphing

- Performed with software supplied with the MIRA-MONITOR
- Seamless data import into Windows® applications for more advanced analysis or graphing

Environmental

- NEMA 4 enclosures
- 32° to 158°F ambient operating temperature

APPLICATIONS

Lean-Burn or Rich-Burn Engines

Natural Gas, LPG, Diesel or Dual-Fuel

- Gas compression
- Power generation
- Air compression
- Liquid or petroleum pumping
- Irrigation systems



Innovative Emission Solutions

miratechcorp.com

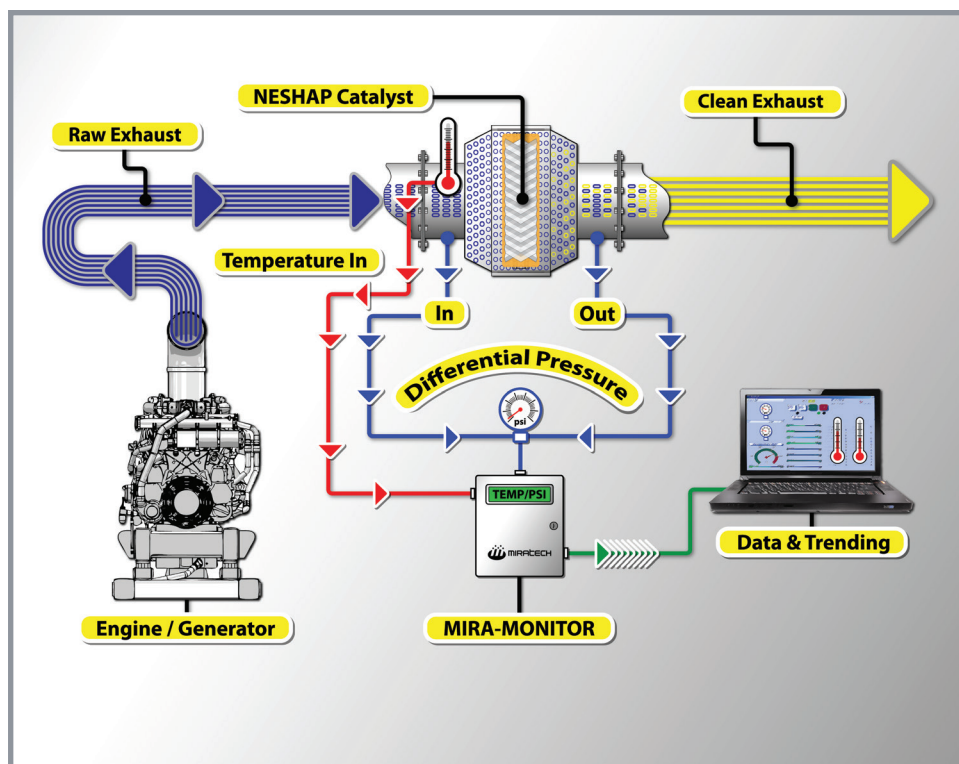
+1 918 794 0341

CONTROLS

MIRA-MONITOR™ Continuous Parametric Monitoring System

The advanced MIRATECH® MIRA-MONITOR™ is a complete, easy-to-install, easy-to-operate, PC-based system that monitors and records catalyst operating parameters as required by the U.S. EPA National Emission Standards for Hazardous Air Pollutants (NESHAP) regulations. The reliable, cost-effective MIRA-MONITOR provides users with a Continuous Parametric Monitoring System (CPMS) as defined by the U.S. EPA and helps gas and diesel engine users meet RICE NESHAP requirements by providing complete catalyst monitoring for total control over regulation compliance.

Federal regulations adopted by U.S. EPA on March 3, 2010 require many owners and operators of non-emergency generators equipped with large engines to comply with a standard known as the RICE NESHAP Rule. The RICE NESHAP rule compliance date for diesel (CI - compression ignition) engines is May 3, 2013, and gas (SI - spark ignited) engines is October 19, 2013. Regulations include work practices and catalyst monitoring as mandated.



The MIRATECH MIRA-MONITOR includes the technology equipment needed to monitor and record inlet temperature and differential pressure to comply with NESHAP CPMS requirements. Users can configure and extract logged data reports using the computer software provided and also provided credible evidence of continuous compliance with NESHAP regulations.

CONTROLS MIRA-MONITOR

The MIRA-MONITOR logs catalyst inlet temperature and differential pressure samples every minute and records 1-hour and 4-hour averages from the samples taken. The MIRA-MONITOR starts recording data when the differential pressure is greater than 1" of water column. It does not require an engine run or engine speed signal. The logger stops recording data when the differential pressure drops below 1" of water column. Two red lamps on the front of the MIRA-MONITOR indicate if there is high exhaust temperature or high differential pressure.

The MIRA-MONITOR provides local indication of the catalyst temperature and differential pressure alarms with two LEDs. Easy to use controls allow the user to manually start or stop logging and step through the operating parameters. When it's time to download the log files, the user can easily connect to the logger with a laptop or desk top computer and an ethernet cable, or remove the compact flash card and download the log file with a card reader.



Only MIRATECH offers the advanced technology, broad product range and innovative, cost-effective, comprehensive emission solutions needed to keep RICE NESHAP compliant! Unsurpassed experience and expertise coupled with fast, responsive customer-focused service and support has made MIRATECH the leader in providing reliable, cost-effective innovative emissions solutions to engine owners in today's increasingly regulatory environment.

Contact MIRATECH today to learn more about the innovative emission solutions.

Learn More: Phone • Email • Web • "The Emissions Monitor"

NSCR • SCR • DPF • Silencers • AFRC • NESHAP CPMS • Field Service • Training • Turnkey



420 South 145th East Avenue • Drop Box A
Tulsa, OK 74108 • USA • +1 918 794 0341
info@miratechcorp.com • miratechcorp.com

WHY MIRATECH®?

Advanced Technology

20 to 20,000+ hp Range

RICE NESHAP Compliant

Turnkey Projects

Best Experience & Expertise

Fast, Responsive Support

Skilled On-site Services

- Supervision & training
- Technical services

Project Management

Replacement Parts

Catalysts

- Available off the shelf in many sizes
- Can be custom engineered to fit any size
- Types
 - 3-way, HAPs, SCR, DPF, Urea hydrolysis, Oxidation (natural gas & diesel)

Catalyst Repairs & Washes

- Free washes for life on NEXT™ & VORTEX™ substrates

Housings

- NX Series™
- IQ™
- CBS™
- CBL™
- Silencer combinations
 - VX Series™
 - RX Series™
 - ZX Series™
 - Ground Access™

Controls

- SCR
- Active DPF
- Air fuel ratio (rich & lean burn)
- Monitors
- RICE NESHAP
- DPF